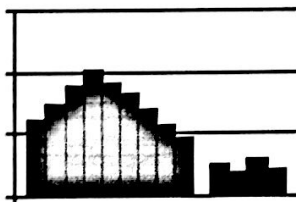
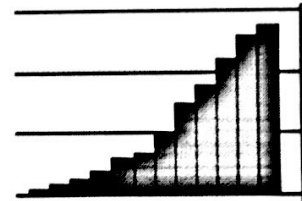
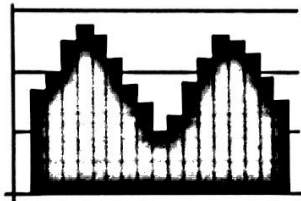
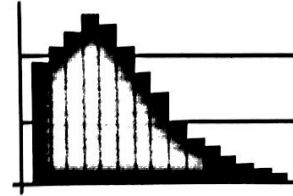
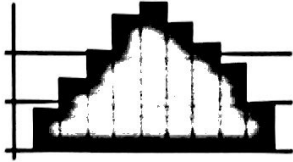


Name:
Unit 2; Histogram Worksheet

Date:

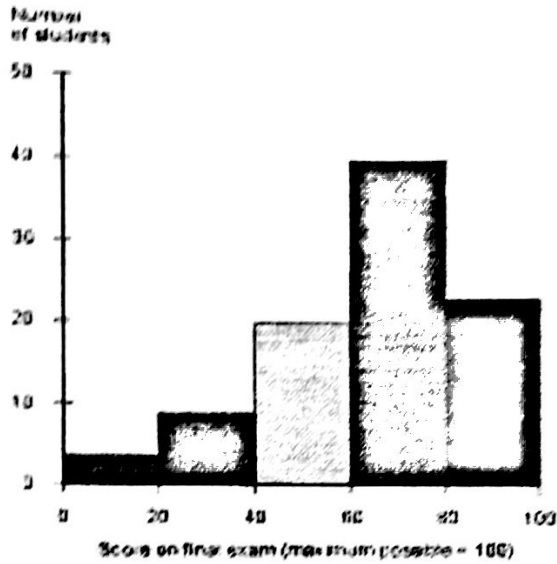
Period:

1 - 5. For the following five histograms, list at least 3 characteristics that describe each histogram (consider symmetric, skewed to left, skewed to right, unimodal, bimodal, multi-modal, outliers, gaps, etc.; SOCS) Describe the skew. What does it tell us about our data?

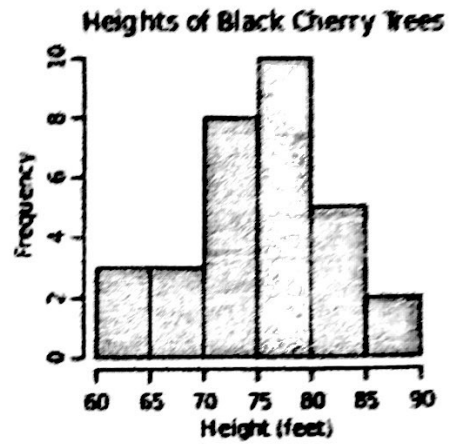


6. Explain the difference between a histogram and a bar graph? How are they alike? How are they different? Be specific.

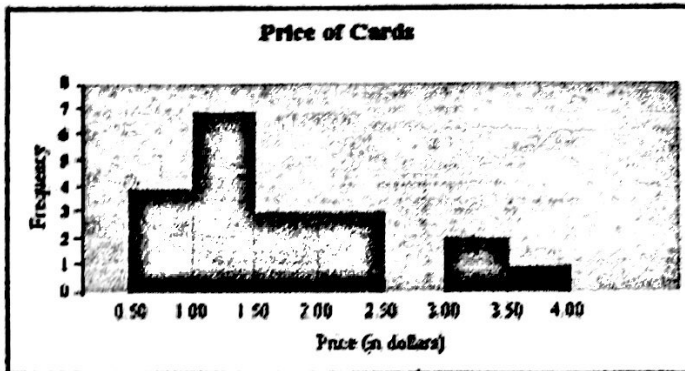
7. How would you estimate the total number of students who were included in this survey of final exam scores? Explain your process of estimating.



8. Could you list the exact heights of all ten students who are between 75" and 80"? Why/why not?



9.



- What is the lowest priced deck of cards? What is the highest priced cards?
- Describe the distribution using SOCS.
- Could you create a dot plot or a box plot from the above histogram? Why or why not?